

IMAGERY



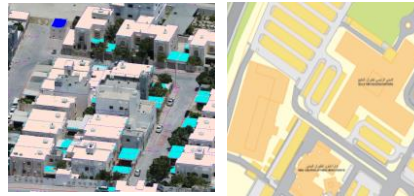
SLRB provides an array of airborne captured imagery products of the Kingdom. Precise aerial imagery is the primary reference to update the national mapping and digital 1:1000 base map.

Imagery is captured approximately every 2 to 3 years and it is outsourced to private sector professional operators.

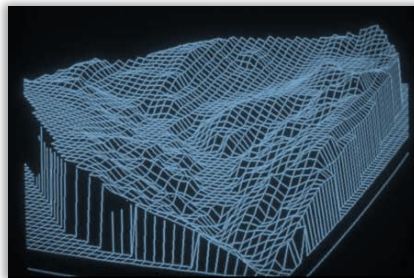
In support of the National Committee of Geospatial Information Governance (NCGIG) SLRB coordinates the Continuous Coordinated Imagery Programme (CCIP) for government entities that also incorporates LiDAR and elevation products.

Imagery products of up to 10cm GSD are available over various years and urban areas. Products include true ortho-imagery, stereo overlap from 60-80% and oblique imagery in high rise regions. A range of derived elevation products are available including DTM, DSM and contours.

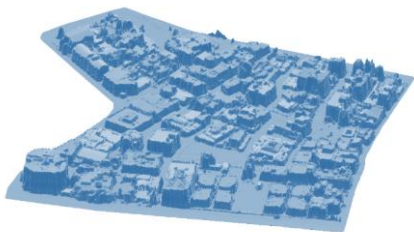
For further information about Topographic survey services please visit the [SLRB Website](#)






Topographic maps
Utilising imagery to produce topographic maps



DTM
Digital Terrain Models obtained from Airborne LiDAR & Imagery



DSM
Digital Surface models obtained from Imagery or LiDAR

Product	Ground Sample Distance (GSD) & Coverage	Format
Ortho-imagery 2017	10 cm GSD 	Digital Mosaic (Various Formats)
Ortho-imagery Archive 2013-2010-2007-2002-1996-1966-1950's	10 cm GSD 	Digital Mosaic (Various Formats)
Oblique 2013 Limited Areas	10 cm GSD 	Digital
Historical Imagery	Various	Film/Scan
Flight Lines	Various	Digital/Scan

