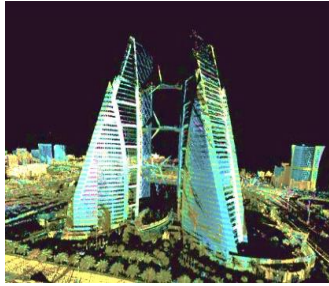


# 3D CITIES

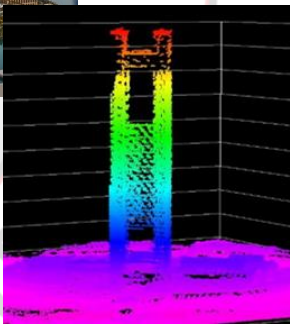


3D cities are digital models of urban areas that represent terrain surfaces, locations, buildings, vegetation, infrastructure and landscape elements in three-dimensional scale.

On request, SLRB adopts modern technology to successfully produce precise and high quality geospatial data of your project area derived from aerial imagery, LiDAR and terrestrial laser scanners.



3D digital model of the Four Seasons Hotel in Bahrain Bay derived from LiDAR.



## Point Clouds

High accuracy data captured using sensors such as LiDAR laser scanners, UAV and mobile mapping vehicles

## Imagery

Geo-referenced images, oblique and true ortho-imagery, stereo photogrammetric models

## 3D Precise Mapping

Three dimensional maps of topographic features with accuracy of up to 8cm



Accuracy	Up to 8 cm	Coverage	On Demand
Currency	On Demand	Format	Geo-referenced Imagery Point Clouds, DTM, DSM

